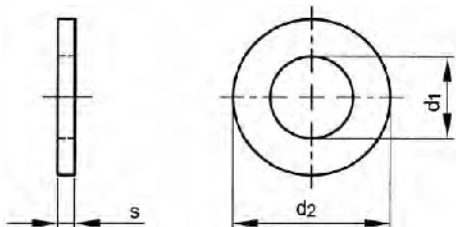
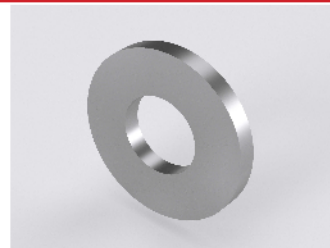


## Plain washer for cheese head screws



DIN 433  
ISO 7092



### Technical Data

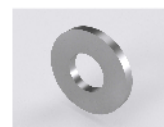
For nom.size	d <sub>1</sub>	d <sub>2</sub>	s	For nom.size	d <sub>1</sub>	d <sub>2</sub>	s
M1.7	1.7	3.5	0.3	M6	6.4	11	1.6
M2.2	2.2	4.5	0.3	M8	8.4	15	1.6
M2	2.2	4.5	0.3	M10	10.5	18	1.6
M2.5	2.7	5.0	0.5	M12	13	20	2
M2.6 (≠DIN)	2.7	5	0.5	M14	15	24	2.5
M3	3.2	6	0.5	M16	17	28	2.5
M3.5	3.7	7	0.5	M18	19	30	2.5
M4	4.3	8	0.5	M20	21	34	3
M5	5.3	9	1				

### Materials

Material	Class	Surface treatment	Color
St		Zipl	
St.St. A2			
St.St. A4			
Br		Ni.pl.	
Plastic PA	PA 6.6		White

#### Plain washer for cheese head screws

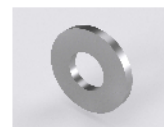
Material Steel  
Surface treatment Zinc plated



For nom. size		For nom. size		For nom. size	
M2	500	M6	250	M14	100
M2,6	500	M8	200	M16	100
M3	250	M10	200	M18	100
M4	250	M12	100	M20	100
M5	250				

#### Plain washer for cheese head screws

Material Stainless steel A2



For nom. size		For nom. size		For nom. size	
M1,7*	2000	M5	500	M14	100
M2,5	500	M6	500	M16	100
M3	500	M8	200	M18	100
M3,5*	1000	M10	200	M20	100
M4	500	M12	100		

**Plain washer for cheese head screws**

**Material** Stainless steel A4



**For nom. size**

M2	100
M2,5	100
M3	500
M3,5*	1000
M4	500

**For nom. size**

M5	500
M6	500
M8	200
M10	200
M12	100

**For nom. size**

M14	100
M16	100
M18	100
M20	100

**Plain washer for cheese head screws**

**Material** Brass  
**Surface treatment** Nickel plated



**For nom. size**

M2	500
M2,6	500
M3	250
M4	250

**For nom. size**

M5	250
M6	250
M8	200
M10	200

**For nom. size**

M12	100
M14	100
M16	100

**Plain washer for cheese head screws**

**Material** Plastic Polyamide (nylon) **DIN** ≈433  
**Class** PA 6.6 **ISO** ≈7092  
**Color** White



**For nom. size**

M3	200
M4	200

**For nom. size**

M5	200
M6	200

**For nom. size**

M8	200
M10	100