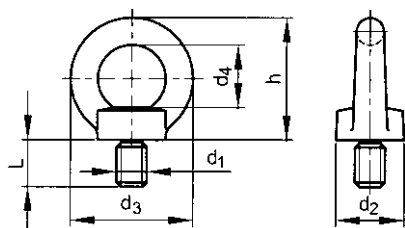


Lifting eye bolt with CE marking



DIN 580
ISO 3266
BS 4278



Technical Data

d ₁	d ₂	d ₃	d ₄	h	L	P
M6 (#DIN)	20	36	20	36	13	1
M8	20	36	20	36	13	1.25
M10	25	45	25	45	17	1.5
M12	30	54	30	53	20.5	1.75
M14 (#DIN)	30	54	30	53	20.5	2
M16	35	63	35	62	27	2
M18 (#DIN)	35	63	35	62	27	2.5
M20	40	72	40	71	30	2.5
M22 (#DIN)	40	72	40	71	30	2.5
M24	50	90	50	90	36	3
M27 (#DIN)	50	90	50	90	36	3
M30	65	108	60	109	45	3.5
M33 (#DIN)	65	108	60	109	45	3.5
M36	75	126	70	128	54	4
M39 (#DIN)	75	126	70	128	54	4
M42	85	144	80	147	63	4.5
M45 (#DIN)	85	144	80	147	63	4.5
M48	100	166	90	168	68	5
M52 (#DIN)	110	184	100	187	78	5
M56	110	184	100	187	78	5.5
M64	120	206	110	208	90	6
M72x6	150	260	140	260	100	6

- If lifting eye bolts form part of lifting equipment, CE marking is necessary.
- Lifting eye bolt do not require CE marking if not used for lifting (as towing eyes for example) or is only used once for lifting (such as for moving machines).

Maximum load L (N)

		M6	M8	M10	M12	M14	M16	M18	M20	M22	M24	M27
1 x bolt		900	1400	2300	3400	5000	7000	9300	12000	15000	18000	25000
2 x bolt		600	1000	1700	2400	3500	5000	6500	8600	10500	12900	18300

		M30	M33	M36	M39	M42	M45	M48	M52	M56	M64	M72x6
1 x bolt		32000	42000	46000	60000	63000	78000	86000	99000	115000	160000	200000
2 x bolt		23000	30500	33000	44000	45000	55000	61000	71000	82000	110000	140000