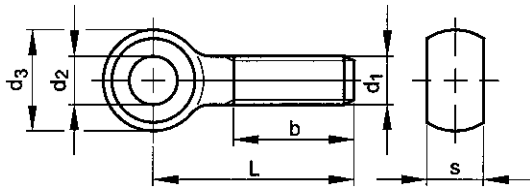


Eye bolt



DIN 444 B
NEN 2310 B



TECHNICAL

d ₁	b (min.): L≤125mm	b (min.): 125mm<L≤200mm	b (min.): L>200mm	d ₂ (H9)	d ₃ (max.)	P	s (max.)
M6	18	-	-	6	14	1	7
M8	22	28	-	8	18	1.25	9
M10	26	32	-	10	20	1.5	12
M12	30	36	49	12	25	1.75	14
M16	38	44	57	16	32	2	17
M20	46	52	65	18	40	2.5	22
M24	54	60	73	22	45	3	25
M27	60	66	79	25	50	3	27
M30	66	72	85	28	55	3.5	30

STANDARD SIZES

d₁ x L

M6X30
M6X40
M6X50
M6X60
M6X70
M6X80

M8X40
M8X45
M8X50
M8X60
M8X70
M8X80
M8X90
M8X100
M8X110
M8X120
M8X130
M8X140

M10X40
M10X50
M10X60
M10X65
M10X70
M10X80
M10X90
M10X100
M10X110
M10X120
M10X130
M10X140

d₁ x L

M12X60
M12X70
M12X80
M12X90
M12X100
M12X110
M12X120
M12X130
M12X140
M12X150

M16X60
M16X70
M16X80
M16X90
M16X100
M16X110
M16X120
M16X130
M16X140
M16X150
M16X160
M16X180
M16X200

M20X60
M20X80
M20X100
M20X110
M20X120
M20X130

d₁ x L

M20X140
M20X150
M20X160
M20X180
M20X200
M20X260

M24X80
M24X100
M24X110
M24X120
M24X130
M24X140
M24X150
M24X160
M24X180
M24X200
M24X220

M27X120
M27X140
M27X160
M27X180
M27X200

M30X120
M30X140
M30X160
M30X180
M30X200